



u::Lux – First Steps

Guidance

www.u-lux.com

office@u-lux.com

Tel: +43/662/450 351-13

Fax: +43/662/450 351-16

u::Lux GmbH

Rechtes Salzachufer 42

5020 Salzburg

Austria



Contents

Preamble / Requirements.....	3
Overview u::Lux – Evaluation-Set	3
Connection of the individual components	4
Configuration software u::Lux Config	5
Download and Installation of the free <i>u::Lux</i> Configuration Software	5
Start u::Lux Config.....	6
Discover the possibilities of the Switch of the future.....	7
Assigning the IP Address	7
Configuration with u::Lux Config	8
Changing of the LED-colour	9
Changing of a symbol	11
Inserting your own text to the symbol	13
Inserting / Playing a sound	14
Activating of the Intro-Sound	14
Key-Sound / Activate Key-Click	14
Version Management.....	15



Preamble / Requirements

Thank you very much for your interest in the switch of the future.

We are pleased to introduce you in the following lines the start with the *u::Lux Switch*.

A computer with Internet connection and Windows operating system (Windows XP or higher) is required. The guidance shows the first steps regarding

- connection of the individual components
- download/installation of the configuration software *u::Lux Config*
- discover the possibilities of the *u::Lux Switch*

Overview u::Lux – Evaluation-Set

The *u::Lux* Evaluation-Set serves particularly to get to know the multitude of possibilities of the *u::Lux Switch* and the respective configuration software.

It contains all necessary components to connect a computer with the *u::Lux Switch*:

- *u::Lux Switch*
- Power supply incl. power cord
- 2x CAT 5e – network cables





Connection of the individual components

Please connect:

- the power supply connection socket „LAN + DC“ with any of the connectors of the *u::Lux Switch*, and the connection socket „LAN“ with the network or your computer.



- the power supply to the power grid.

Note:

As soon as the *u::Lux Switch* is supplied with power, an interactive short demonstration is starting.



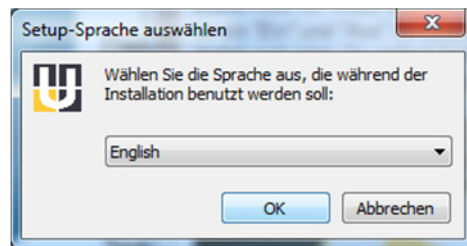


Configuration software u::Lux Config

Download and Installation of the free *u::Lux* Configuration Software

Download the latest version of [u::Lux Config](#) for your Windows version under “Downloads” on the website of *u::Lux*.

Install the software by double clicking on the saved file and follow the instructions on your screen.
(Please note that administrator rights are required for the installation)

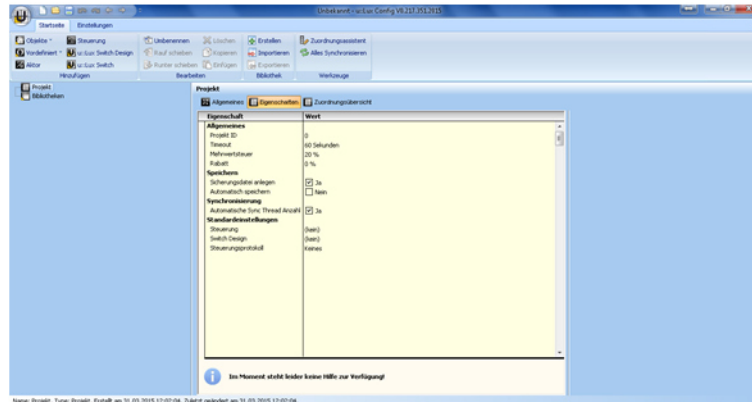


At Windows Vista or higher a certification warning may occur. In this case select the option “Continue anyway” to start the installation.

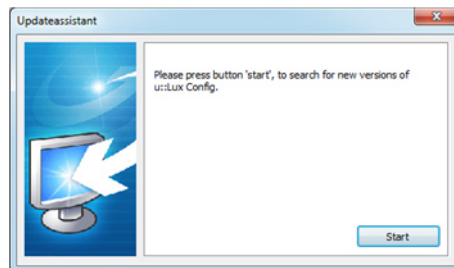


Start u::Lux Config

As the system starts up the starting screen of *u::Lux Config* appears. On the left you will find the project tree, consisting of the Project and the Libraries.



Depending on the installed version of *u::Lux Config* there can appear guides during the start process. The program checks if a newer version is available and informs if necessary by the following note:



Select “Start” and the update wizard starts and guides you through the further update process.

u::Lux – First Steps

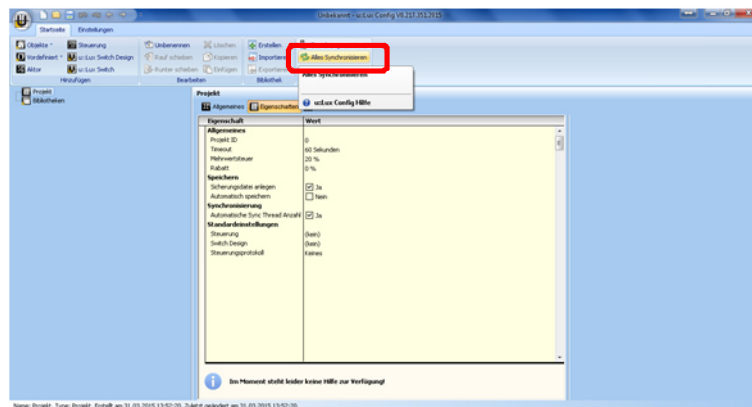


Discover the possibilities of the Switch of the future

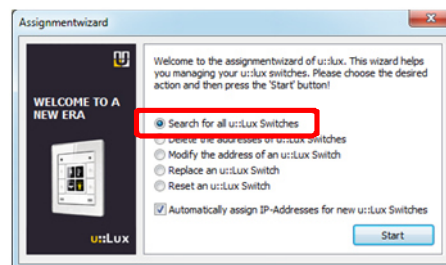
The configuration software *u::Lux Config* manages all control tasks and involved *u::Lux Switches* in so-called projects.

Assigning the IP Address

Initially run the "Assignmentwizard" to recognize the connected *u::Lux Switch* automatically



and to create it in the project tree...



Follow the instructions of the Assignmentwizard!



Configuration with u::Lux Config

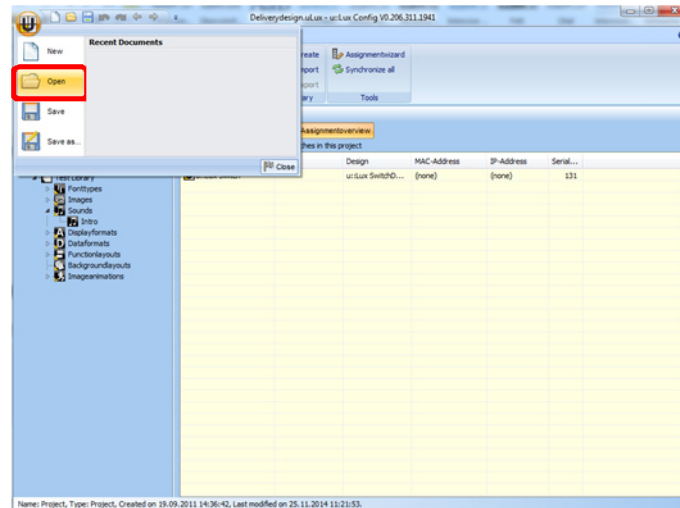
The following examples show just a few of the numerous possibilities of design to adapt the *u::Lux Switch* to your needs.

u::Lux – First Steps

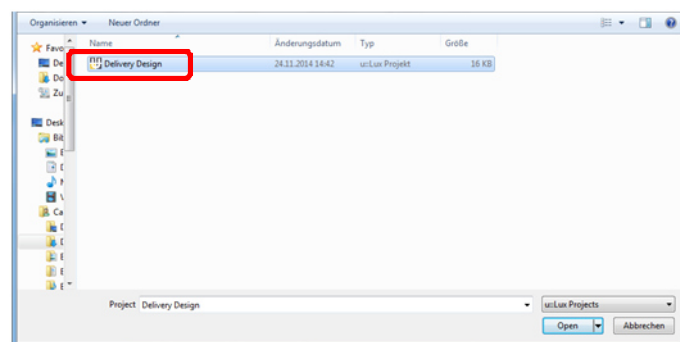


Changing of the LED-colour

Select the menu item “Open” in the File Menu and ...

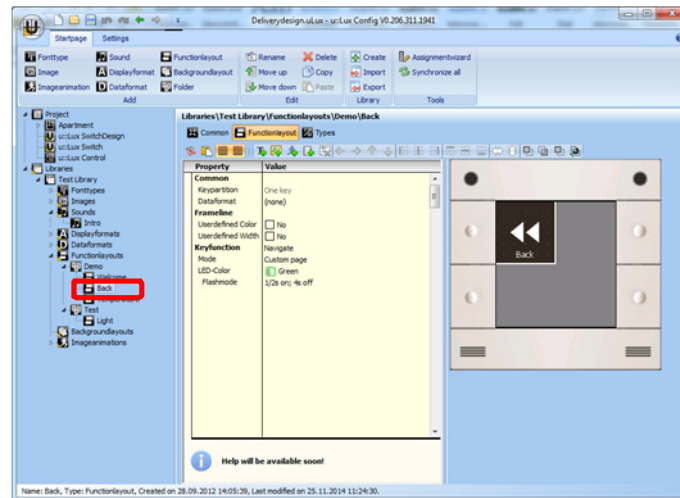


... open the project “Delivery Design”

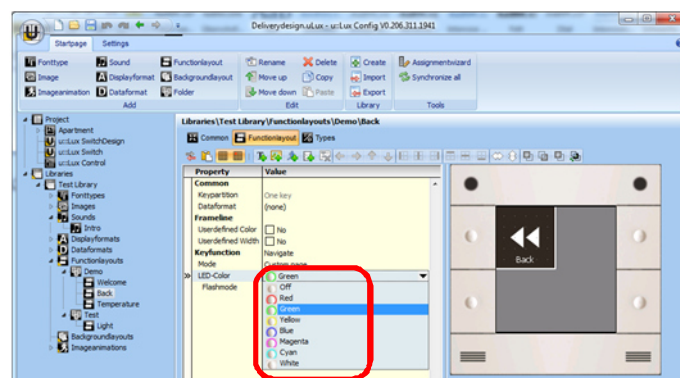


In the project tree on the left side of *u::Lux Config* change to the entry “Library\Test Library\Functionlayouts” and select “Demo back”.

u::Lux – First Steps



Under “LED-Color” change from “green” to “blue” and set the LED-blinking mode to “Always On”.
You can watch the results of the changes immediately on your screen.



Through “Synchronize all” the information to the *u::Lux Switch* is transferred and activated.



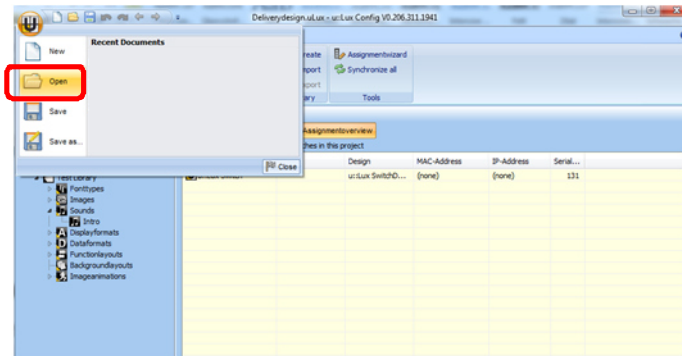
Congratulations, you have now changed the LED-colour of your *u::Lux Switch* - Welcome screen!

u::Lux – First Steps

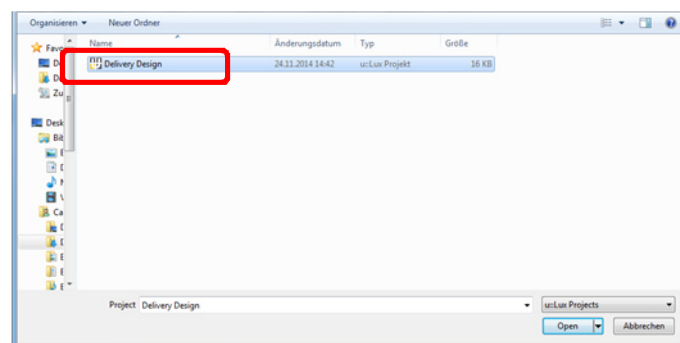


Changing of a symbol

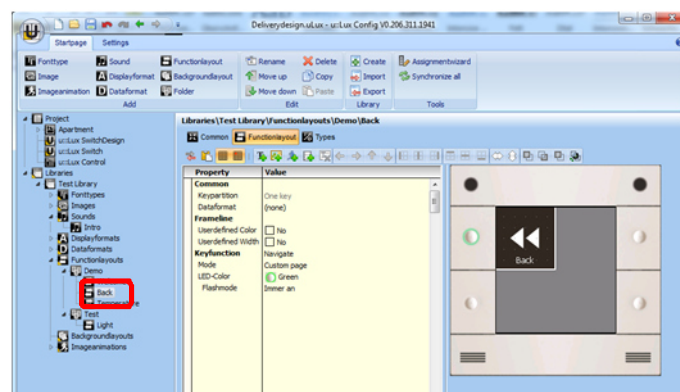
Select the menu item “Open” in the File Menu and ...



... open the project „Delivery Design“

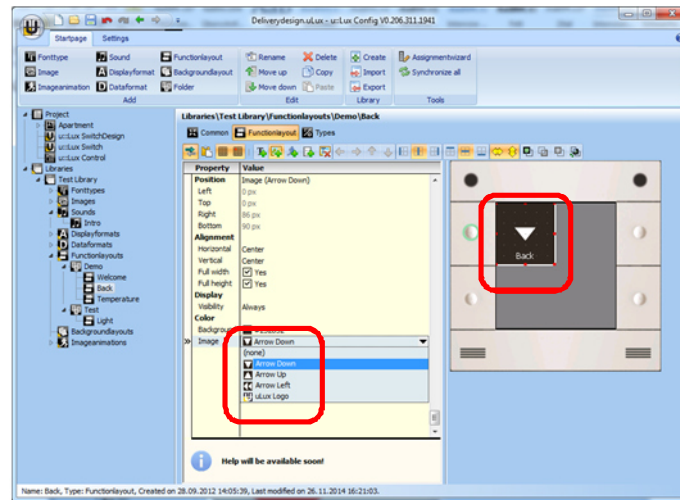





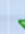
In the project tree change to the entry “Library\Test Library\ Functionlayouts” and select “Demo back”.





Click on the double arrow in the *u::Lux Display* and select under „Image“ the entry „Arrow down”.

u::Lux – First Steps



You can arrange the symbol area, marked with red dots, as required. Just use the mouse (keep the left key pressed) or the green key symbols     on the screen.

With the blue formatting symbols  on the screen the graphic can be arranged automatically within the boundary lines marked with red dots.

To transmit the changes to the *u::Lux Switch* please confirm in the toolbar, as in the previous example, the button „ Synchronize“!

Congratulations, you have now also adjusted a symbol on the switch!

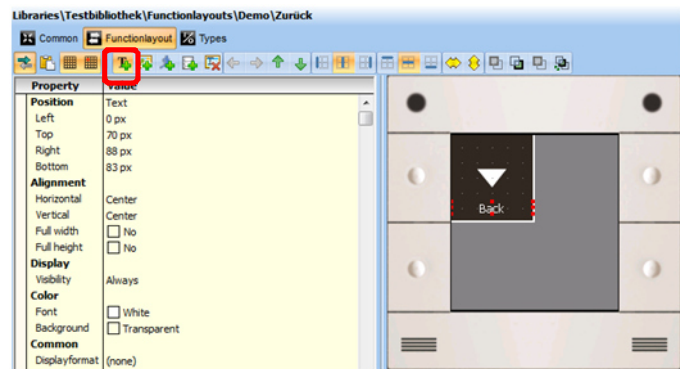
u::Lux – First Steps







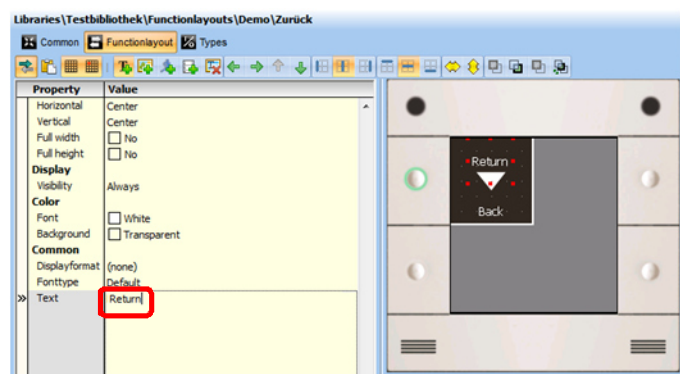
Inserting your own text to the symbol


If you wish, you can now insert your own text to the symbol.

Just click on the button for adding text.



Drag e.g. up the text field with the mouse or the green key symbols     and insert the desired text information in the field “Text”.



By confirming the button “ Synchronize“ the information are transmitted to the *u::Lux Switch* and the changes are implemented.

If desired you can also design your text with font colours, background colours and font types.

Congratulations, you have adjusted the display to your own ideas!



Inserting / Playing a sound


The *u::Lux Switch* can also play sounds.

The data can be saved either in the *u::Lux Switch* or with some controls it can be streamed via the 100Mbit fast Ethernet-network, this depends on the used communication language with the *u::Lux Switch* (*u::Lux Message Protocol*).

Activating of the Intro-Sound

The *u::Lux Intro* is a quick animation which appears as soon as the *u::Lux Switch* is supplied with power and if the switch got the permission. The animation can also be effected with sound.


For activating select “Projekt\u::Lux SwitchDesign\Settings\Intro sound” in the directory tree. Now you can change the entry “Volume” to e.g. 75% and if needed activate more settings (“Increasing Volume”, etc.).

Click „ Synchronize“ – Ready!

Key-Sound / Activate Key-Click

The following example shows how to activate the Key-Click.

Select the entry „ Projekt\u::Lux SwitchDesign\Settings\Key sound” in the directory tree. Choose a sound. Then you can define the “Volume” to e.g. 25%.

Click again „ Synchronize“ – Ready!

u::Lux Config provides further support with its help function which you can call up pressing F1.

Additional examples you will find soon at www.u-lux.com/NextSteps

Supporting introductory videos of *u::LuxConfig* you can find at www.u-lux.com/training

If you have any questions please send us an email to support@u-lux.com



Version Management

Version	Date	Name	Notes
1.00	02.10.2012	TS	Creation of the document
1.01	14.11.2012	KH	Correction/Release
1.02	04.12.2012	AK	Assignment Assistant has been updated
1.03	13.05.2012	AK	Graphics adapted, Open added, Names changed
1.04	01.10.2014	AK	Contact has been updated
1.05	24.03.2015	CABA	Chapter “Unpacking the items” has been removed Addition of the link to ConfigVideo - support
1.06	31.03.2015	THSI	Editorial changes; some images have been updated