



SMART BUILDING | SMART HOME
THE INTELLIGENT SOLUTION
FOR CONVENIENT
BUILDING CONTROL



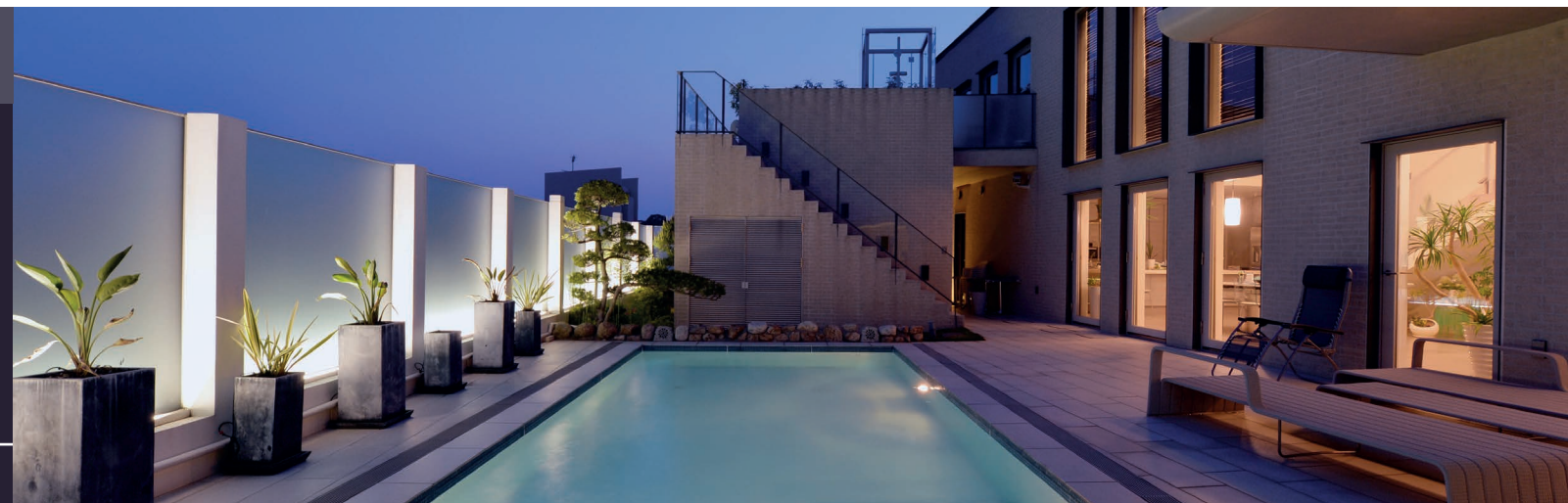
BECOME A PARTNER, RETAILER OR DISTRIBUTOR!

CONTACT

u::Lux GmbH
Rechtes Salzachufer 42
5020 Salzburg
AUSTRIA

tel +43/662/450 351 -0
email office@u-lux.com

Order your u::Lux evaluation kit and try
THE individual room controller for yourself:
www.u-lux.com/shop



u::Lux SWITCH: THE INDIVIDUAL ROOM CONTROLLER FOR ALL BUILDING TECHNOLOGIES.

FOR EVERY PROJECT THE RIGHT SOLUTION.
FLEXIBLE USE IN SMART HOME & SMART BUILDING.



MY ADVANTAGES WITH THE MODULAR u::Lux SYSTEM



High-resolution
colour graphic display



4 keys with pressure
point and RGB LEDs



Scenes and
operating modes



Freely
expandable



Integrated brightness-
and proximity sensor



AddOns for CO₂,
humidity, temperature
and motion



Premium
technology



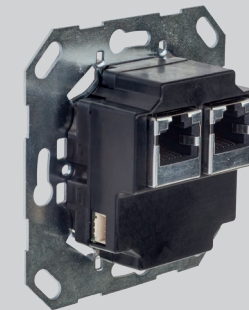
Intuitive
operation



Timeless design fits in
55mm standard frames

The u::Lux Switch is simply plugged onto the corresponding bus coupler.

u::Lux Switch for extremely fast Ethernet

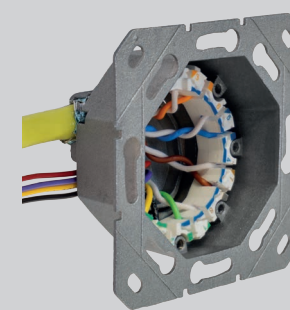


Rear side u::Lux Switch RJ45
(Daisy-Chain wiring)

✓ Easy connection
with patch cables

✓ Up to 10 u::Lux
Switches per line

✓ Any number
of lines



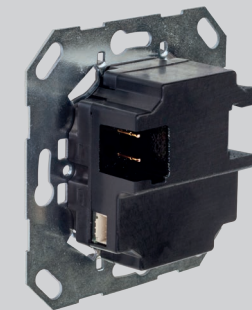
Rear side u::Lux Switch IDC
(star wiring)

✓ Compatible with any
PoE-switch

✓ Particularly
energy efficient

✓ Patented solderless and
screwless connection
technology

u::Lux Switch for KNX



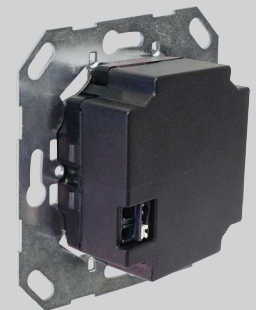
Rear side u::Lux Switch KNX-TP
(KNX-TP bus system)

✓ KNX - the worldwide
standard

✓ Easy integration
into the KNX system

✓ Configurable directly in
the ETS (no plug-in
necessary)

u::Lux Switch for dS



Rear side u::Lux Switch dS
(digitalSTROM system)

✓ Connection through 2
wires to 230V-lines

✓ Individually configurable
through dS u::Lux App

✓ Perfect for
retrofitting

You find our control partners at www.u-lux.com

