



# u::Lux

## PRODUCT CATALOG

Rechtes Salzachufer 42  
A - 5020 Salzburg | Austria

[office@u-lux.com](mailto:office@u-lux.com)  
[www.u-lux.com](http://www.u-lux.com)

Tel +43 662 / 450 351 - 13





**ANIMATES  
YOUR  
BUILDING.**



## OVER view

P. 4

1 **u::Lux** Switch

P. 10

2 **u::Lux** AddOn

P. 14

3 **u::Lux** NetCon + Inj

P. 15

4 **u::Lux** Evaluation - Sets

P. 16

5 **u::Lux** Software

## UNCOMPLICATED.

No matter what you want to control with u::Lux. Operating the switch is self-explanatory due to the high-resolution graphic display and the four illuminated keys.

## UNIVERSAL.

No matter if you want to replace existing switches or install new ones – u::Lux has standard dimensions and thus fits into every electrical standard outlet.

## UNRIVALLED.

The modular u::Lux system can be expanded according to requirements. It is based on proven network technology (100Mbit Ethernet) and consists of only few components.



# 1 u::Lux Switch


Product image	Art. No.	Description
 	10205	<p><b>u::Lux Switch RJ45</b></p> <p>IP-capable, universal display- and control unit, with colour graphic display, proximity sensor, loudspeaker, brightness sensor, 4 RGB – LEDs and 2 RJ45 connections for daisy-chain cabling (up to 10 u::Lux Switches per line). Power supply through u::Lux NetCon Power, u::Lux NetInj Power or similar devices. Connection via Ethernet.</p>
 	10215	<p><b>u::Lux Switch LSA/IDC</b></p> <p>IP-capable, universal display- and control unit, with colour graphic display, proximity sensor, loudspeaker, brightness sensor, 4 RGB – LEDs and LSA/IDC-connection (requires star wiring, power supply via PoE, min. class 1). Connection via Ethernet.</p>



# 1 u::Lux Switch

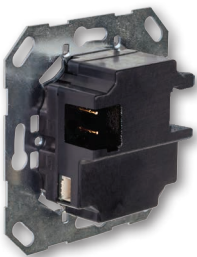
Product image	Art. No.	Description
 	10220	<p><b>u::Lux Switch KNX-TP</b></p> <p>Universal display- and control unit, with colour graphic display, proximity sensor, brightness sensor, 4 RGB – LEDs and connection to KNX-TP. Configurable directly in the ETS without plug-in.</p>
 	10230	<p><b>u::Lux Switch dS</b></p> <p>Universal display- and control unit for digitalSTROM system, with colour graphic display, proximity sensor, loudspeaker, brightness sensor, 4 RGB – LEDs and connection to 230V-line.</p>

# 1 u::Lux Switch

Product image	Art. No.	Description
 	10205AC	<p><b>u::Lux Switch RJ45 anthracite</b></p> <p>IP-capable, universal display- and control unit, with colour graphic display, proximity sensor, loudspeaker, brightness sensor, 4 RGB – LEDs and 2 RJ45 connections for daisy-chain cabling (up to 10 u::Lux Switches per line). Power supply through u::Lux NetCon Power, u::Lux NetInj Power or similar devices. Connection via Ethernet.</p>
 	10215AC	<p><b>u::Lux Switch LSA/IDC anthracite</b></p> <p>IP-capable, universal display- and control unit, with colour graphic display, proximity sensor, loudspeaker, brightness sensor, 4 RGB – LEDs and LSA/IDC-connection (requires star wiring, power supply via PoE, min. class 1). Connection via Ethernet.</p>

- 1
2
3
4
5

# 1 u::Lux Switch

Product image	Art. No.	Description
 	10220AC	<b>u::Lux Switch KNX-TP anthracite</b> Universal display- and control unit, with colour graphic display, proximity sensor, brightness sensor, 4 RGB – LEDs and connection to KNX-TP. Configurable directly in the ETS without plug-in.
 	10230AC	<b>u::Lux Switch dS anthracite</b> Universal display- and control unit for digitalSTROM system, with colour graphic display, proximity sensor, loudspeaker, brightness sensor, 4 RGB – LEDs and connection to 230V-line.



# 1 u::Lux Switch

Product image	Art. No.	Description
 	10205AB	<p><b>u::Lux Switch RJ45 black</b></p> <p>IP-capable, universal display- and control unit, with colour graphic display, proximity sensor, loudspeaker, brightness sensor, 4 RGB – LEDs and 2 RJ45 connections for daisy-chain cabling (up to 10 u::Lux Switches per line). Power supply through u::Lux NetCon Power, u::Lux NetInj Power or similar devices. Connection via Ethernet.</p>
 	10215AB	<p><b>u::Lux Switch LSA/IDC black</b></p> <p>IP-capable, universal display- and control unit, with colour graphic display, proximity sensor, loudspeaker, brightness sensor, 4 RGB – LEDs and LSA/IDC-connection (requires star wiring, power supply via PoE, min. class 1). Connection via Ethernet.</p>









## 1 u::Lux Switch

Product image	Art. No.	Description
 	10220AB	<b>u::Lux Switch KNX-TP black</b> Universal display- and control unit, with colour graphic display, proximity sensor, brightness sensor, 4 RGB – LEDs and connection to KNX-TP. Configurable directly in the ETS without plug-in.
 	10230AB	<b>u::Lux Switch dS black</b> Universal display- and control unit for digitalSTROM system, with colour graphic display, proximity sensor, loudspeaker, brightness sensor, 4 RGB – LEDs and connection to 230V-line.



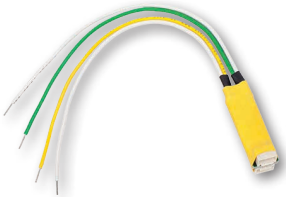
## 2 u::Lux AddOn

Product image	Art. No.	Description
	10952	<p><b>u::Lux AddOn RH + TEMP</b>  u::Lux air humidity- /temperature- module incl. mounting material and connecting cable (approx. 25cm) for the u::Lux Switch.</p> <p>Extends the capabilities of the u::Lux Switch by a relative humidity- and temperature measurement.</p>
	11092	<p><b>u::Lux AddOn MD + RH + TEMP</b>  u::Lux motion detector with integrated air humidity- /temperature- module incl. mounting material and connecting cable (approx. 25cm) for the u::Lux Switch. Range motion detector approx. 5m.</p> <p>Extends the capabilities of the u::Lux Switch by a motion detector and measures furthermore the relative air humidity and temperature.</p>
	11104	<p><b>u::Lux AddOn CO2 + RH + TEMP</b>  u::Lux CO2- /air humidity- /temperature module incl. mounting material and connecting cable (approx. 25cm) for the u::Lux Switch.</p> <p>Extends the capabilities of the u::Lux Switch by a CO2, air humidity and temperature measurement.  (Not compatible with u::Lux Switch KNX-TP)</p>
	11381	<p><b>u::Lux AddOn Multisensor (MD + CO2 + RH + TEMP)</b>  u::Lux motion detector with integrated CO2- / air humidity- /temperature- module incl. mounting material and connecting cable (approx. 25cm) for the u::Lux Switch. Range motion detector approx. 5m. Incl. configurable RGB-LEDs for displaying the status of motion and CO2.  (Currently only combinable with u::Lux Switch IP (RJ45/IDC).)</p>





The mounting of the u::Lux AddOn module is effected together with the u::Lux Switch in two separate single flush mountings and requires a double frame e.g. Gira E22 program. (Frame system 55x55mm)

1 2 3 4 5

## 2 u::Lux AddOn

Product image	Art. No.	Description
	<b>11001</b>	<p><b>u::Lux AddOn IN2</b></p> <p>Digital dual-channel input module for the u::Lux Switch. Up to two digital signals e.g. from a pushbutton or a switch can be connected to the u::Lux Switch which can evaluate the signals and transfer them to the control without occupying a physical input on the control. Combinable with any u::Lux sensor AddOn.</p>

## 2 u::Lux AddOn

Product image	Art. No.	Description
	10952AC	<p><b>u::Lux AddOn RH + TEMP anthracite</b>  u::Lux air humidity- /temperature – module incl. mounting material and connecting cable (approx. 25cm) for the u::Lux Switch.</p> <p>Extends the capabilities of the u::Lux Switch by a relative humidity- and temperature measurement.</p>
	11092AC	<p><b>u::Lux AddOn MD + RH + TEMP anthracite</b>  u::Lux motion detector with integrated air humidity- /temperature- module incl. mounting material and connecting cable (approx. 25cm) for the u::Lux Switch. Range motion detector approx. 5m.</p> <p>Extends the capabilities of the u::Lux Switch by a motion detector and measures furthermore the relative air humidity and temperature.</p>
	11104AC	<p><b>u::Lux AddOn CO2 + RH + TEMP anthracite</b>  u::Lux CO2- /air humidity- /temperature module incl. mounting material and connecting cable (approx. 25cm) for the u::Lux Switch.</p> <p>Extends the capabilities of the u::Lux Switch by a CO2, air humidity and temperature measurement.  (Not compatible with u::Lux Switch KNX-TP)</p>
	11381AC	<p><b>u::Lux AddOn Multisensor anthracite (MD + CO2 + RH + TEMP)</b>  u::Lux motion detector with integrated CO2- / air humidity- /temperature- module incl. mounting material and connecting cable (approx. 25cm) for the u::Lux Switch. Range motion detector approx. 5m. Incl. configurable RGB-LEDs for displaying the status of motion and CO2.  (Currently only combinable with u::Lux Switch IP (RJ45/IDC).)</p>

The mounting of the u::Lux AddOn module is effected together with the u::Lux Switch in two separate single flush mountings and requires a double frame e.g. Gira E22 program. (Frame system 55x55mm)

1 2 3 4 5



## 2 u::Lux AddOn

Product image	Art. No.	Description
	10952AB	<p><b>u::Lux AddOn RH + TEMP black</b>  u::Lux air humidity- /temperature – module incl. mounting material and connecting cable (approx. 25cm) for the u::Lux Switch.</p> <p>Extends the capabilities of the u::Lux Switch by a relative humidity- and temperature measurement.</p>
	11092AB	<p><b>u::Lux AddOn MD + RH + TEMP black</b>  u::Lux motion detector with integrated air humidity- /temperature- module incl. mounting material and connecting cable (approx. 25cm) for the u::Lux Switch. Range motion detector approx. 5m.</p> <p>Extends the capabilities of the u::Lux Switch by a motion detector and measures furthermore the relative air humidity and temperature.</p>
	11104AB	<p><b>u::Lux AddOn CO2 + RH + TEMP black</b>  u::Lux CO2- /air humidity- /temperature module incl. mounting material and connecting cable (approx. 25cm) for the u::Lux Switch.</p> <p>Extends the capabilities of the u::Lux Switch by a CO2, air humidity and temperature measurement.  (Not compatible with u::Lux Switch KNX-TP)</p>

The mounting of the u::Lux AddOn module is effected together with the u::Lux Switch in two separate single flush mountings and requires a double frame e.g. Gira E22 program. (Frame system 55x55mm)

1 2 3 4 5

### 3 u::Lux NetCon + Inj

Product image	Art. No.	Description
	10962	<p><b>u::Lux NetCon Power</b></p> <p>Power supply and 4-fold network – switch to connect up to 20 u::Lux Switches (2 x 10 pieces) through the network cable or to establish the communication connection to the control and the configuration PC.</p> <p>Requires 24 V DC.</p>
	11022	<p><b>u::Lux NetInj Power</b></p> <p>Power supply for up to 20 u::Lux Switches (2 x 10 pieces) through the network cable.</p> <p>May require an own network-switch to establish the communication connection to the control and to the configuration PC.</p> <p>Requires 24 V DC.</p>



## 4 u::Lux Evaluation - Sets

Product image	Art. No.	Description
	10315	<p><b>u::Lux Evaluationset RJ45 incl. table stand</b> Predefined set to get to know the possibilities of the u::Lux Switch.</p> <p><b>Contains:</b> u::Lux Switch RJ45, power supply (injector), 2x network cable, Plexiglas – stand. Connect, download the software for free and get started!</p> <p>Set also available in anthracite (10315AC) or black (10315AB).</p>
	10415	<p><b>u::Lux Evaluationset LSA/IDC incl. table stand</b> Predefined set to get to know the possibilities of the u::Lux Switch.</p> <p><b>Contains:</b> u::Lux Switch RJ45, power supply (injector), 2x network cable, Plexiglas – stand. Connect (requires punch down tool for LSA/IDC), download the software for free and get started!</p> <p>Set also available in anthracite (10415AC) or black (10415AB).</p>
	10510	<p><b>u::Lux Evaluationset KNX-TP incl. table stand</b> Predefined set to get to know the possibilities of the u::Lux Switch.</p> <p><b>Contains:</b> u::Lux Switch KNX-TP, Plexiglas- stand and standard cover frame.</p> <p>Set also available in anthracite (10510AC) or black (10510AB).</p>

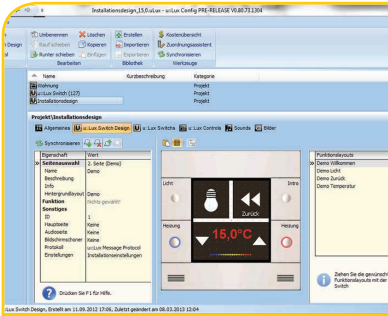
1 2 3 4 5



## 5 u::Lux Software

### Product image Example of use

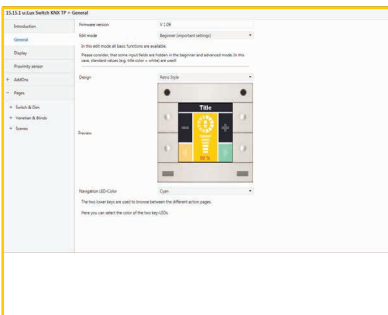
### Description



#### u::Lux Config

The configuration software of the u::Lux Switch is free of charge.

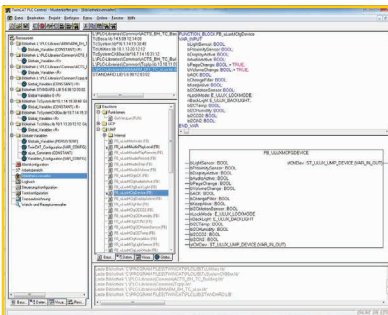
Download for free at  
[www.u-lux.com/uluxConfig](http://www.u-lux.com/uluxConfig)



#### u::Lux ETS Database

Free configuration of the u::Lux Switch KNX directly in the ETS  
no Plug-In required  
requires min. ETS Version 5.5.2.

Further details at  
[www.u-lux.com/en/product-range/software](http://www.u-lux.com/en/product-range/software)



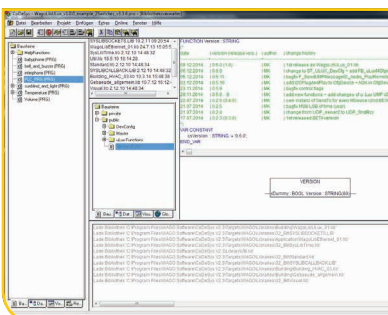
#### Beckhoff PLC - Library

&

#### ABM PLC - Library für Beckhoff

Free functional module for operating the u::Lux Switch  
with controls of Beckhoff.

Further details at  
[www.u-lux.com/beckhoffLibrary](http://www.u-lux.com/beckhoffLibrary)



#### Wago PLC - Library

Free functional module for operating the u::Lux Switch  
with controls of Wago.

Further details at  
[www.u-lux.com/wagoLibrary](http://www.u-lux.com/wagoLibrary)

1 2 3 4 5

**WHEN WILL  
IT DAWN  
ON YOU?**

Your u::Lux partner